

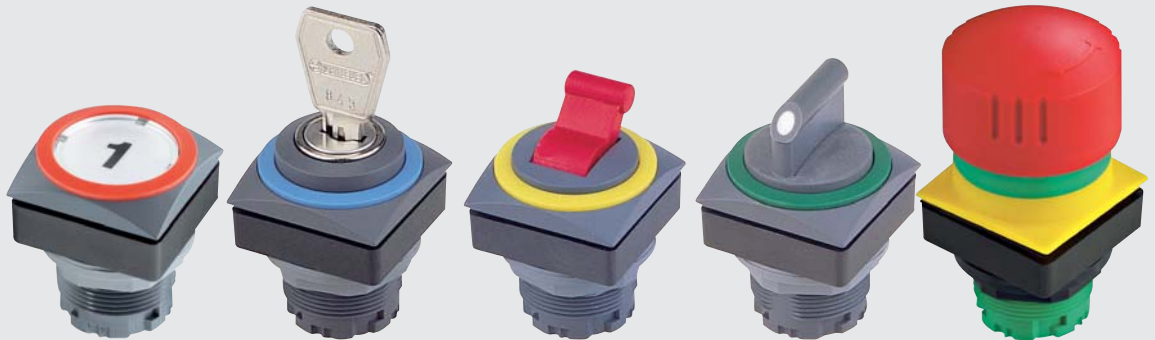
QUARTEX-R-JUWEL

For the construction and production of machines and technical devices design aspects are more and more in the limelight. On the one hand design creates an ergonomically better surrounding field, on the other hand design is an expression of our modern environment. Many design exhibitions and numerous design awards confirm that impressively.

In order to come up to the modern design requirements we developed the new QUARTEX-R-JUWEL series which particularly distinguish by their flat construction and by clearly perceptible switching operations. The coloured rings underline the formal originality and are a striking feature for communication and operation. These robust series provide individual scopes for design, thus, being an important and modern part of an integrated design conception.

Degree of protection: IP65

Protection class : II



pushbuttons with illuminating and labelling option

key actuators

toggle heads

selector heads

emergency stops



QUARTEX-R-JUWEL

The QUARTEX-R-JUWEL actuators fit the following contact blocks:

Modular contact system
Screw connections,
finger-protected acc. to VBG4
Type series MT...



Technical Data:

acc. to IEC/EN 60947-5-1
AC15, DC13
acc. to IEC/EN 61058-1
250V~ / 440V~
16(10)A / 10(6)A
Lamp socket: BA9s
Lamp output: max. 2W / 250V



GOST R



Modular contact system
Spring-cage connections,
finger-protected acc. to VBG4
Type series DT...



acc. to IEC/EN 61058-1
400V~
10(5)A
Lamp socket: BA9s
Lamp output: max. 2W / 250V



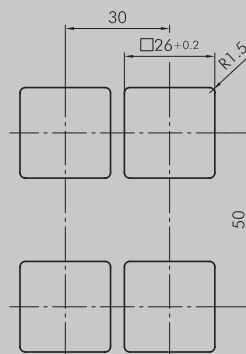
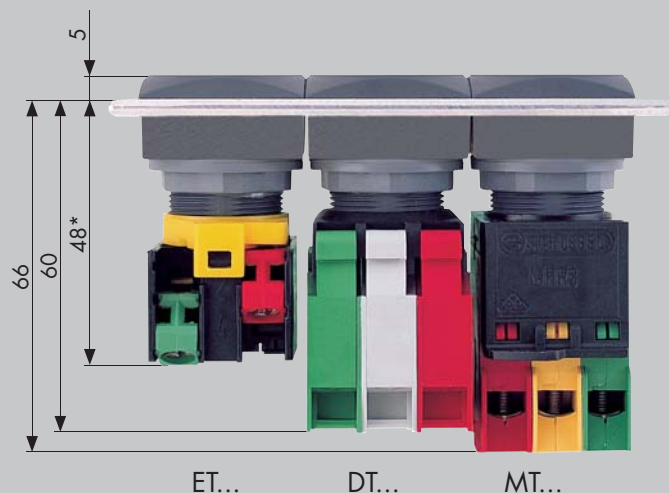
Standard contact blocks
Screw connections,
finger-protected acc. to VBG4
Type series ET...



acc. to IEC/EN 60947-5-1
AC15, DC13
acc. to IEC/EN 61058-1
250V~ / 440V~
10(6)A / 6(3)A
Lamp socket: BA9s
Lamp output: max. 2W / 250V



Mounting depth dimensions



*) illuminated pushbutton 57 mm