

# RVA series - stainless steel

Control units for exclusive applications in a rough area. Stainless steel makes the units noble, robust and corrosion-proof. Coloured base rings offer individual design possibilities. A colour screen ensures the lighting function of illuminated pushbuttons. An excellent tactile contact feedback increases the operating comfort. A great variety of contact blocks and the ease of assembly ensures a high flexibility for each application.



pushbuttons



illuminated pushbuttons



selector heads



key actuators



The RVA series fit the following contact blocks:

Modular contact system

Screw connections  
Finger-protected acc. to VBG4  
Type series **MT...**



**Technical Data:**

acc. to IEC/EN 60947-5-1  
AC15, DC13  
acc. to IEC/EN 61058-1  
250V~ / 440V~  
16(10)A / 10(6)A  
Lamp socket: BA9s  
Lamp output: max. 2W / 250V



Modular contact system

Cage-Clamp\* technology  
Finger-protected acc. to VBG4  
Type series **DT...**



acc. to IEC/EN 61058-1  
400V~ / 250V~  
10(5)A / 16(10)A  
Lamp socket: BA9s  
Lamp output: max. 2W / 250V



Modular contact system

Cage-Clamp\* quick connection system  
Finger-protected acc. to VBG4  
Type series **DS...**



acc. to IEC/EN 61058-1  
250V~ / 400V~  
16(10)A / 10(5)A  
Lamp socket: BA9s  
Lamp output: max. 2W / 250V



Standard contact blocks

Screw connections  
Finger-protected acc. to VBG4  
Type series **ET...**

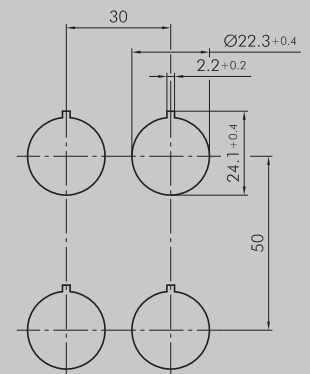
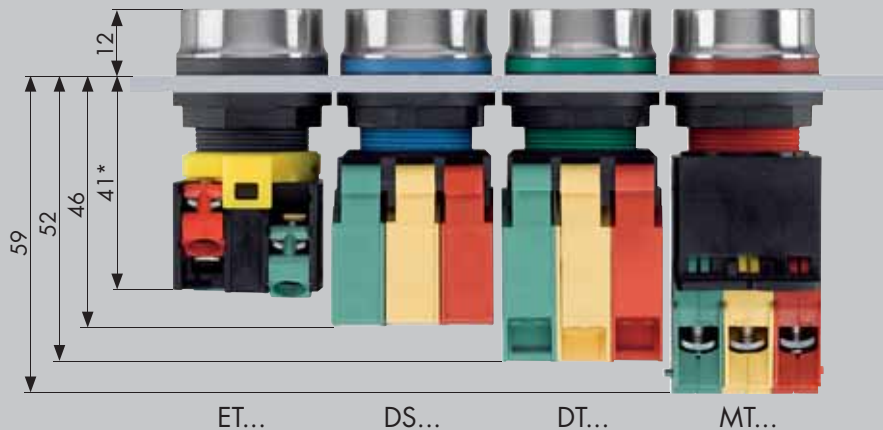


acc. to IEC/EN 60947-5-1  
AC15, DC13  
acc. to IEC/EN 61058-1  
250V~ / 440V~  
10(6)A / 6(3)A  
Lamp socket: BA9s  
Lamp output: max. 2W / 250V



\*) CAGE CLAMP is a registered Trademark of WAGO Kontakttechnik GmbH Germany

Mounting depth dimensions



\*) illuminated pushbutton 50 mm